

DS-820W

brother
at your side

IMPROVE YOUR WORKFLOW



SCAN
Scan your documents into searchable PDF files.



ARCHIVE
Archive your documents using the powerful bundled software.



SEARCH
Quickly and easily retrieve your documents for editing, viewing, sharing or printing.

DS-820W Specification

GENERAL

Image Sensor	CIS (Contact Image Sensor)
Paper Sensor	Optical photo sensor
Battery	AP-1306 Lithium Battery
Memory	4GB SD memory card included. SD card size limit 2GB to 32GB
Interface	Hi-Speed USB 2.0, Wi-Fi 802.11 b/g/n

SCANNING

Standard Mono & Colour	
Scan Speed	7.5ppm (8 seconds per page) A4 up to 300dpi
Resolution Optical	Up to 600 x 600 dpi
Resolution Interpolated	1200 dpi
Colour Depth	48-bit internal & 24-bit external
Gray Scale	256 levels
Supported File Formats	JPEG, TIFF, BMP, GIF, (PNG Button Manager only) & PDF (standard and searchable)
Scan to Destinations	E-mail, file, app, printer, shared network folder, OCR, FTP, cloud and SharePoint®

SCANNER DRIVER

Windows®	TWAIN (Windows® 8, Windows® 7, Windows Vista® & Windows® XP)
Macintosh	TWAIN (Mac OS X 10.6.X, 10.7.X, 10.8.X)
Linux	TWAIN and Scan App

SOFTWARE FOR WINDOWS®

DsmobileCapture	Easy to use scan software
Button Manager V2	One touch scanning to e-mail, File, App, Folder, FTP or Printer
Nuance™ PaperPort™ 12SE	Scan, share, search and organise Documents on your PC
NewSoft® Presto!® BizCard 6	Global business card management solution

SOFTWARE FOR MAC

DsmobileCapture	Easy to use scan software
NewSoft® Presto!® BizCard 6	Global business card management solution
NewSoft® Presto!®	Entry level document management & sharing program
PageManager 9	

MOBILE APPLICATIONS

Scan Hub	Free App for iOS and Android devices, Scan organise and share your documents from your mobile device
----------	--

PAPER HANDLING

Paper Input	1 sheet
Paper Sizes	Between 55mm - 215.9mm in width & 90mm - 812.8mm in length
Paper Weights	Between 60 g/m² & 105 g/m²

WEIGHTS & DIMENSIONS

With Carton	354(W) x 254(D) x 70(H)mm 1.18KG
Without Carton	308(W) x 52.5(D) x 40.7(H)mm 440g

LI-ION BATTERY

Charging time	4 hours
Continuous Standby Time	5 minutes (When the auto power function is active)
Scannable number of sheets (Wi-Fi OFF)	90 Sheets
Scannable number of sheets (Wi-Fi OFF)	450 Sheets

ENVIRONMENT

Power Requirement	USB bus-power 5V DC
Power Consumption (Scanning / battery charging) USB connected	5V/500mA or less
Power Consumption (Battery fully charged / Power off) USB connected	5V/1mA or less
Sound Pressure Level (Active)	50dB



Brother Online

Brother offer various software and services to help improve your business efficiency and workflow. To see how we can help your business please visit: online.brother.eu

*Requires software that comes bundled with the machine

Contact:

brother
at your side

Brother International Europe Ltd
Brother House, 1 Tame Street, Audenshaw, Manchester M34 5JE
Tel: +44 (0)161-330 6531 Fax: +44 (0)161-330 5520
Website: www.brother.com

All specifications correct at time of printing. Brother is a registered trademark of Brother Industries Ltd. Brand product names are registered trademarks or trademarks of their respective companies.

SCAN YOUR DOCUMENTS WHEREVER WHENEVER NO WIRES, NO PC!



The DS-820W is not just a scanner, it brings a whole new way of working. Powered by a rechargeable battery and having the ability to sync your scanned data straight to your mobile device, this scanner really does make your day effortless.

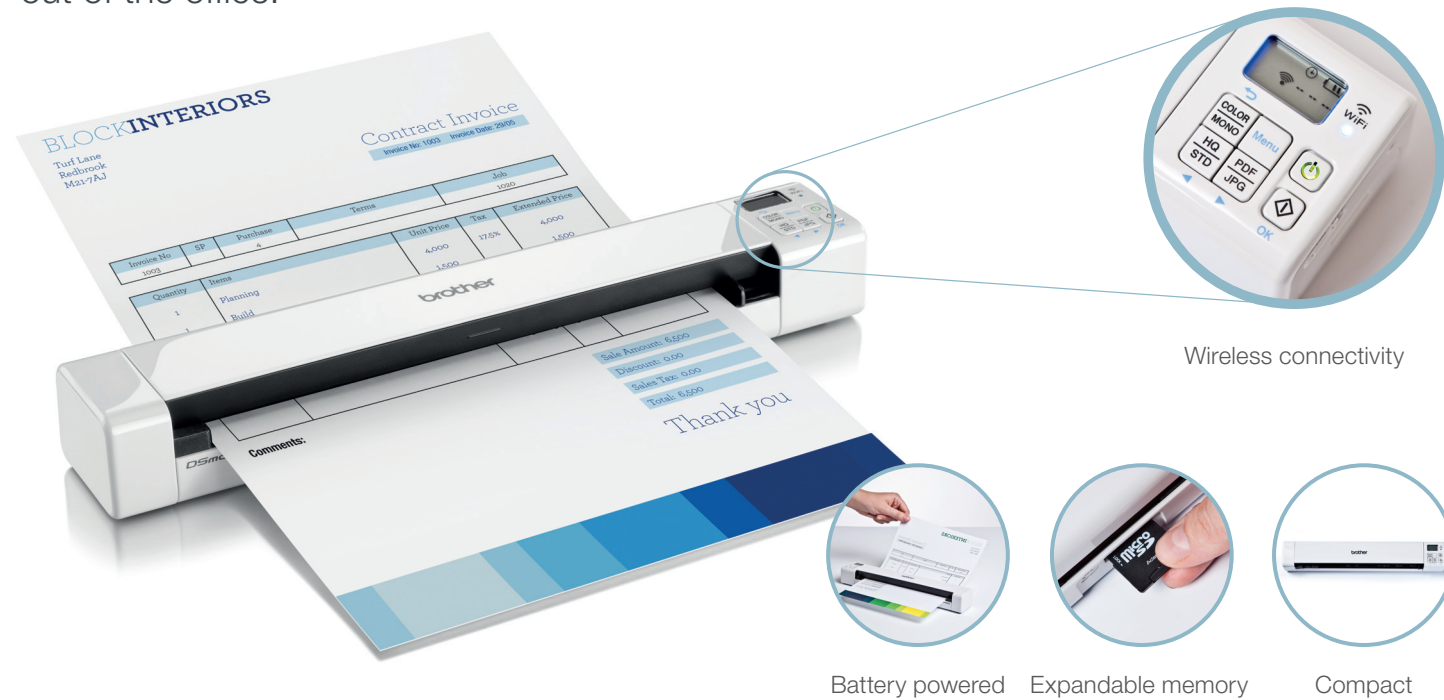
Features to optimise your workflow

- 4GB SD card included
- Built in wireless connectivity
- Battery powered
- Compatible with Windows® and Mac
- 600 x 600 dpi
- Professional software suite included



Fast. Efficient. Ready when you are

The DS-820W changes everything from the way you work to where you work. It packs a wide range of features inside a stylish compact casing, to make your day more efficient. Powered by a rechargeable battery you can scan directly to the removable SD card and wirelessly transfer your scanned data to your mobile device, PC or cloud, offering ultimate flexibility while out of the office.



Wireless connectivity

Battery powered

Expandable memory

Compact

Product features:

Easy to use

- One touch scanning technology
- Powered by a rechargeable battery or directly from the PC by USB cable
- Built in wireless connectivity

Fast and efficient

- Scan speed up to 7.5ppm (8 seconds per page) in mono and colour
- Scan to various destinations including: e-mail, file, app, printer, shared network folder, FTP, SD card, cloud and SharePoint®¹
- Scan anything from business cards, plastic ID cards, photographs, receipts and up to A4 documents

Compact

- Compact dimensions 308(W) x 52.5(D) x 40.7(H)mm
- Weighs only 440g

High quality

- Up to 600 x 600 dpi
- Scan your documents in high quality ready to be stored on the cloud

Compatibility

- The supplied TWAIN driver allows seamless integration into various document management systems

Scan to Cloud

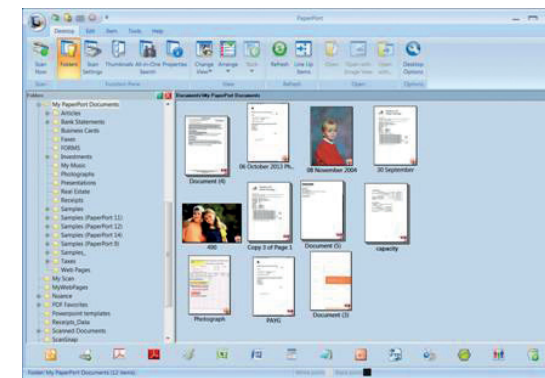
- Scan and sync your documents from your SD card directly to the cloud for PC free scanning. Everyone in the business can then access the information on their mobile devices.

The bundled suite of software includes:

The DS-820W is bundled with powerful software to become the perfect solution for document management and improved workflow. Helping you to access and retrieve documents whilst away from the office. Share documents to improve communication and collaboration, cutting down the amount of paper you have to travel with.

Nuance™ PaperPort™ 12SE (Windows®)

Powerful document management, editing and PDF creation program with connector for Microsoft® SharePoint®.



NewSoft® Presto!® PageManager 9 (Mac)

Scan and organise digitised files. View, edit, e-mail or save files as searchable PDF, HTML, RTF, or TXT files.

Button Manager V2 (Windows®)

Configure several scan to options using the direct scan button on the scanner.

NewSoft® Presto!® BizCard 6 (Windows® and Mac)

Scan and export editable contact information directly to Microsoft® Outlook® and other contact management systems.

DSmobileCapture (Windows® and Mac)

A utility to capture and view scanned documents from your mobile scanner.

Everything you need to scan, share and organise whilst on the move

